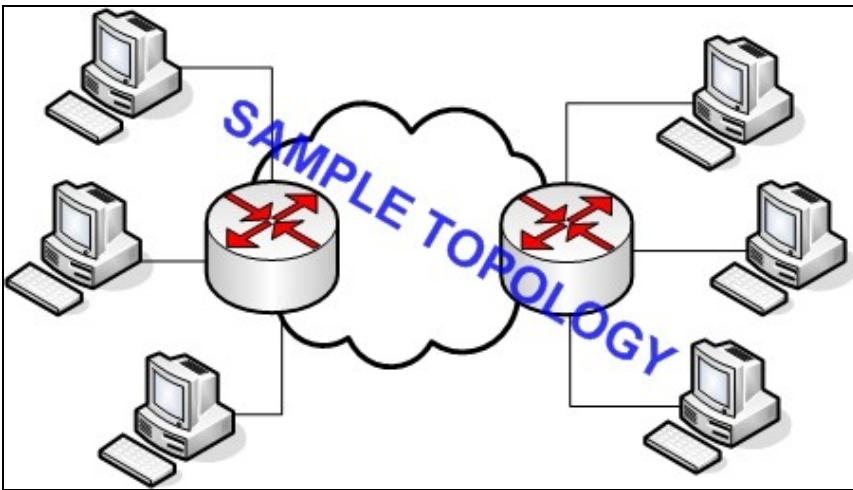


## Contents

- [1 Introduction](#)
- [2 Design](#)
- [3 Troubleshooting Steps](#)
- [4 Related show Commands](#)
- [5 Show running-config](#)
- [6 Related Information](#)

## Introduction

## Design



## Troubleshooting Steps

## Related show Commands

This section provides information you can use to confirm your configuration is working properly after the troubleshooting is complete.

Certain show commands are supported by the [Output Interpreter Tool \(registered customers only\)](#), which allows you to view an analysis of show command output.

## Show running-config

Add show running config of your device

## Related Information

[Technical Support & Documentation - Cisco Systems](#)