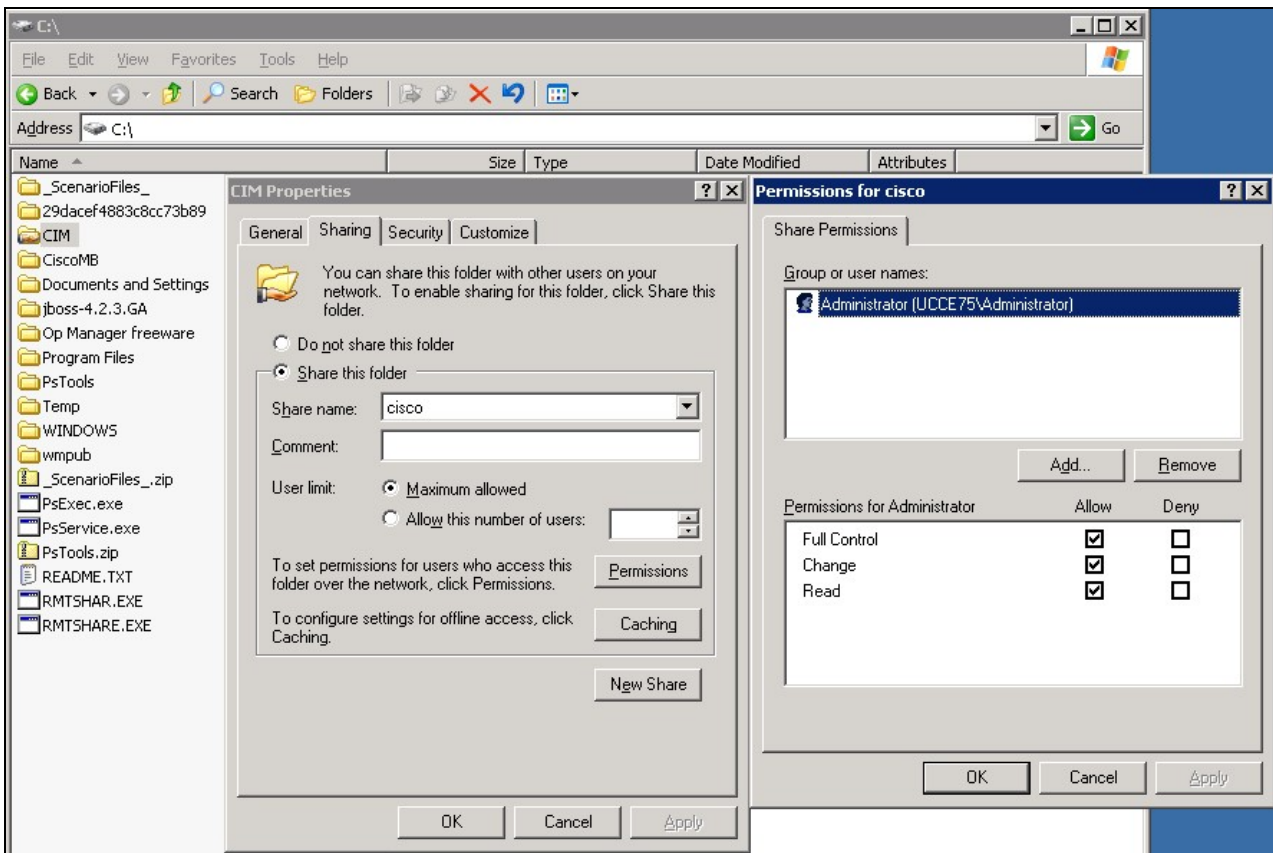


Contents

- [1 File Server Startup](#)
- [2 Messaging Server Startup](#)

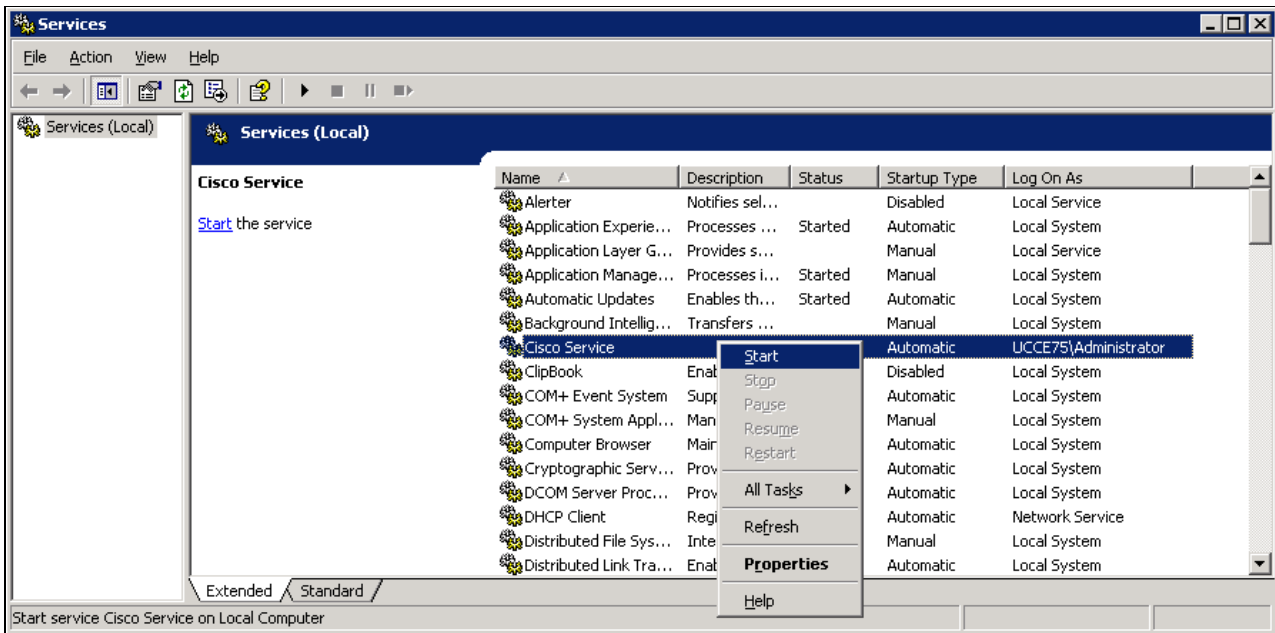
File Server Startup

The File Server is simply a Windows Universal Naming Convention (UNC) share named "cisco" that is pointed at the C:\CIM directory on the File Server. As long as this folder is shared (and the user has the right permissions), there is no startup action needed.



Messaging Server Startup

Start_File_Server,_Messaging_Server



Note: 2 Java.exe are initially started; one ends @ ~20MB Mem Usage

- Total Java.exe at finish: 1 @ ~200MB Mem Usage
- Total Javaw.exe at finish: 0
- Total time for Startup: 25 seconds

View a [video example of Messaging Server Startup.](#)