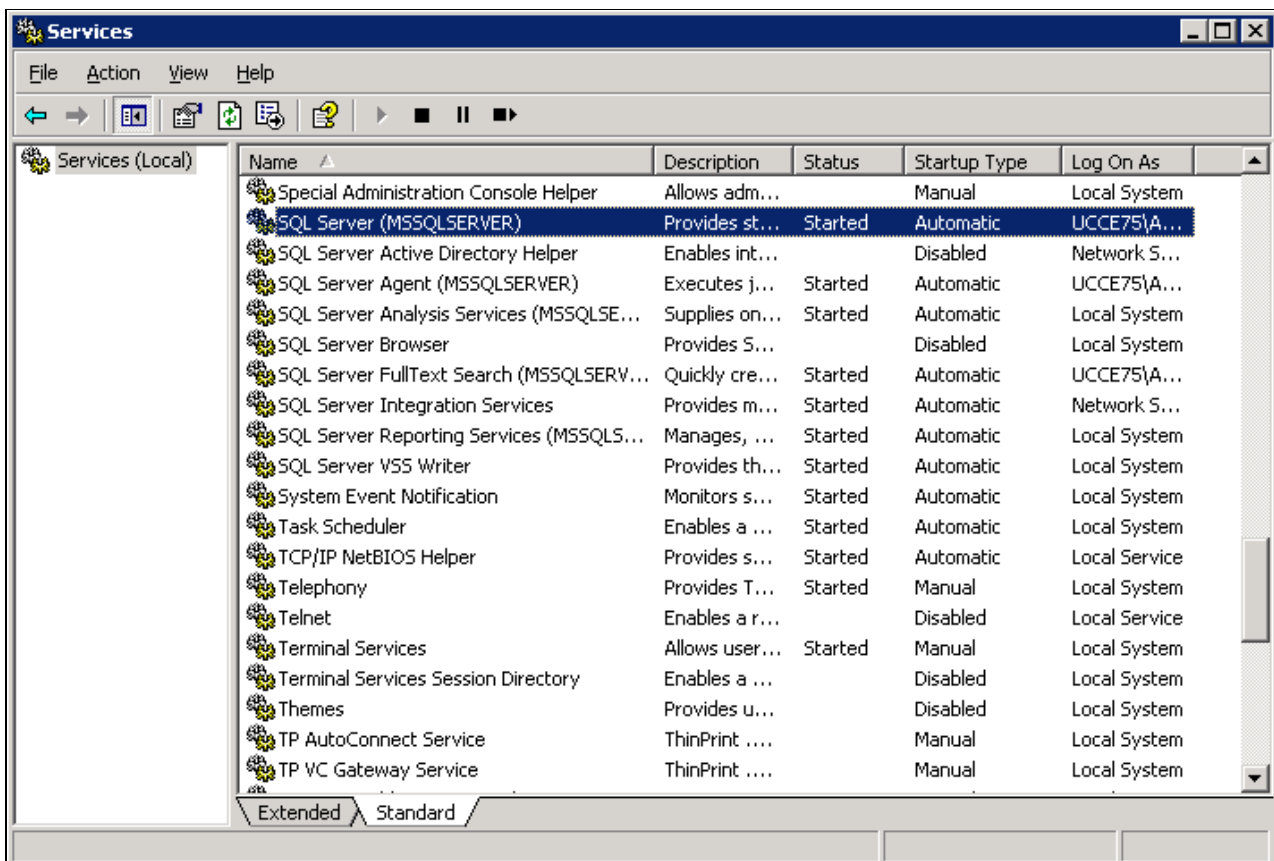


Contents

- [1 Database Server Startup](#)
- [2 Databases Contained in SQL Server 2005](#)
- [3 SQL Server Profiler](#)

Database Server Startup

Ensure SQL Server (MSSQLSERVER) service has started.



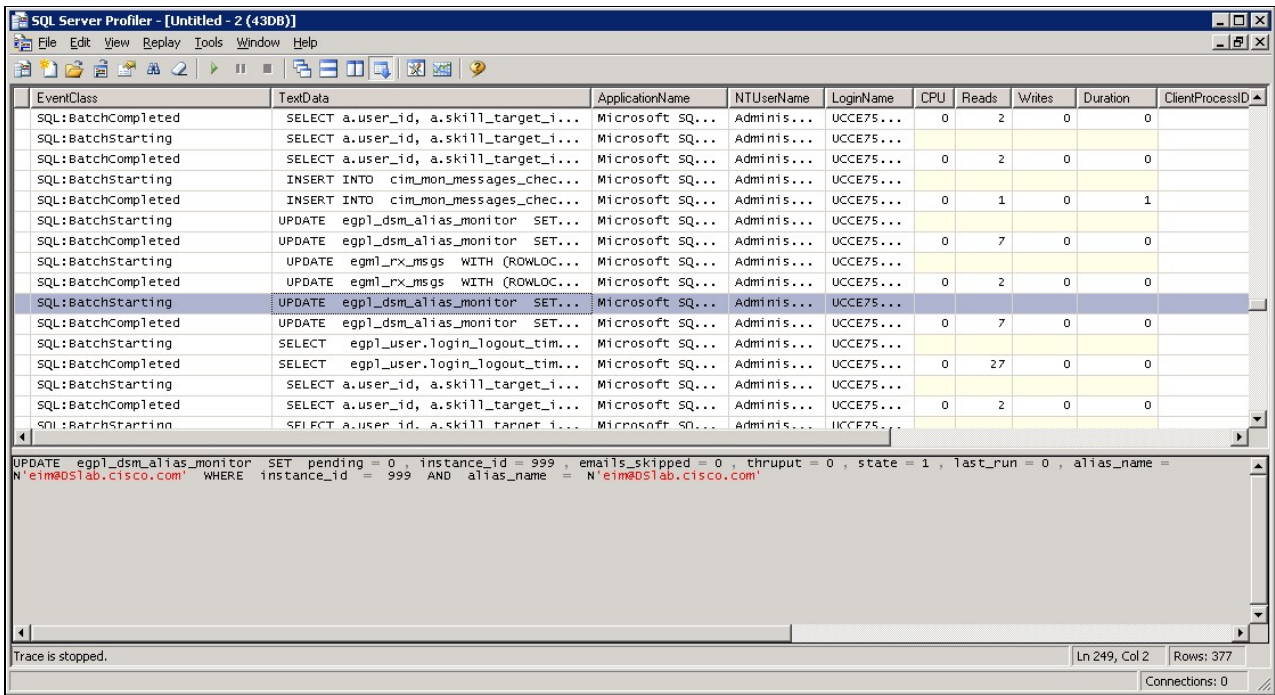
Databases Contained in SQL Server 2005

- eGMasterDB - Platform configuration
- eGActiveDB - Activities, Queues, Users.
- eGArchiveDB - Archived activities
- eGReportsDB - Dedicated reporting data (Optional with Enterprise Edition)

SQL Server Profiler

This tool can be used to view the queries being run against the EIM/WIM databases. This can be useful in troubleshooting scenarios to see exactly what is occurring under the hood.

Start_Database_Server



The screenshot displays the SQL Server Profiler interface with a trace titled 'Untitled - 2 (43DB)'. The main window shows a table of events with columns: EventClass, TextData, ApplicationName, NTUserName, LoginName, CPU, Reads, Writes, Duration, and ClientProcessID. The events include SQL:BatchCompleted, SQL:BatchStarting, and SQL:BatchCompleted for various queries. The bottom pane shows the SQL text for the selected event: 'UPDATE egpl_dsm_alias_monitor SET pending = 0, instance_id = 999, emails_skipped = 0, thruput = 0, state = 1, last_run = 0, alias_name = N'e1m805lab.cisco.com' WHERE instance_id = 999 AND alias_name = N'e1m805lab.cisco.com'. The status bar at the bottom indicates 'Trace is stopped.', 'Ln 249, Col 2', 'Rows: 377', and 'Connections: 0'.

EventClass	TextData	ApplicationName	NTUserName	LoginName	CPU	Reads	Writes	Duration	ClientProcessID
SQL:BatchCompleted	SELECT a.user_id, a.skill_target_1...	Microsoft SQ...	Adminis...	UCCE75...	0	2	0	0	
SQL:BatchStarting	SELECT a.user_id, a.skill_target_1...	Microsoft SQ...	Adminis...	UCCE75...					
SQL:BatchCompleted	SELECT a.user_id, a.skill_target_1...	Microsoft SQ...	Adminis...	UCCE75...					
SQL:BatchStarting	INSERT INTO cim_mon_messages_chec...	Microsoft SQ...	Adminis...	UCCE75...					
SQL:BatchCompleted	INSERT INTO cim_mon_messages_chec...	Microsoft SQ...	Adminis...	UCCE75...	0	1	0	1	
SQL:BatchStarting	UPDATE egpl_dsm_alias_monitor SET...	Microsoft SQ...	Adminis...	UCCE75...					
SQL:BatchCompleted	UPDATE egpl_dsm_alias_monitor SET...	Microsoft SQ...	Adminis...	UCCE75...	0	7	0	0	
SQL:BatchStarting	UPDATE egml_rx_msgs WITH (ROWLOC...	Microsoft SQ...	Adminis...	UCCE75...					
SQL:BatchCompleted	UPDATE egml_rx_msgs WITH (ROWLOC...	Microsoft SQ...	Adminis...	UCCE75...	0	2	0	0	
SQL:BatchStarting	UPDATE egpl_dsm_alias_monitor SET...	Microsoft SQ...	Adminis...	UCCE75...					
SQL:BatchCompleted	UPDATE egpl_dsm_alias_monitor SET...	Microsoft SQ...	Adminis...	UCCE75...	0	7	0	0	
SQL:BatchStarting	SELECT egpl_user.login_logout_tim...	Microsoft SQ...	Adminis...	UCCE75...					
SQL:BatchCompleted	SELECT egpl_user.login_logout_tim...	Microsoft SQ...	Adminis...	UCCE75...	0	27	0	0	
SQL:BatchStarting	SELECT a.user_id, a.skill_target_1...	Microsoft SQ...	Adminis...	UCCE75...					
SQL:BatchCompleted	SELECT a.user_id, a.skill_target_1...	Microsoft SQ...	Adminis...	UCCE75...	0	2	0	0	
SQL:BatchStarting	SELECT a.user_id, a.skill_target_1...	Microsoft SQ...	Adminis...	UCCE75...					

```
UPDATE egpl_dsm_alias_monitor SET pending = 0, instance_id = 999, emails_skipped = 0, thruput = 0, state = 1, last_run = 0, alias_name = N'e1m805lab.cisco.com' WHERE instance_id = 999 AND alias_name = N'e1m805lab.cisco.com'
```

Trace is stopped. Ln 249, Col 2 Rows: 377 Connections: 0

For a step-by-step introduction to the SQL Profiler, see [this external article](#).