

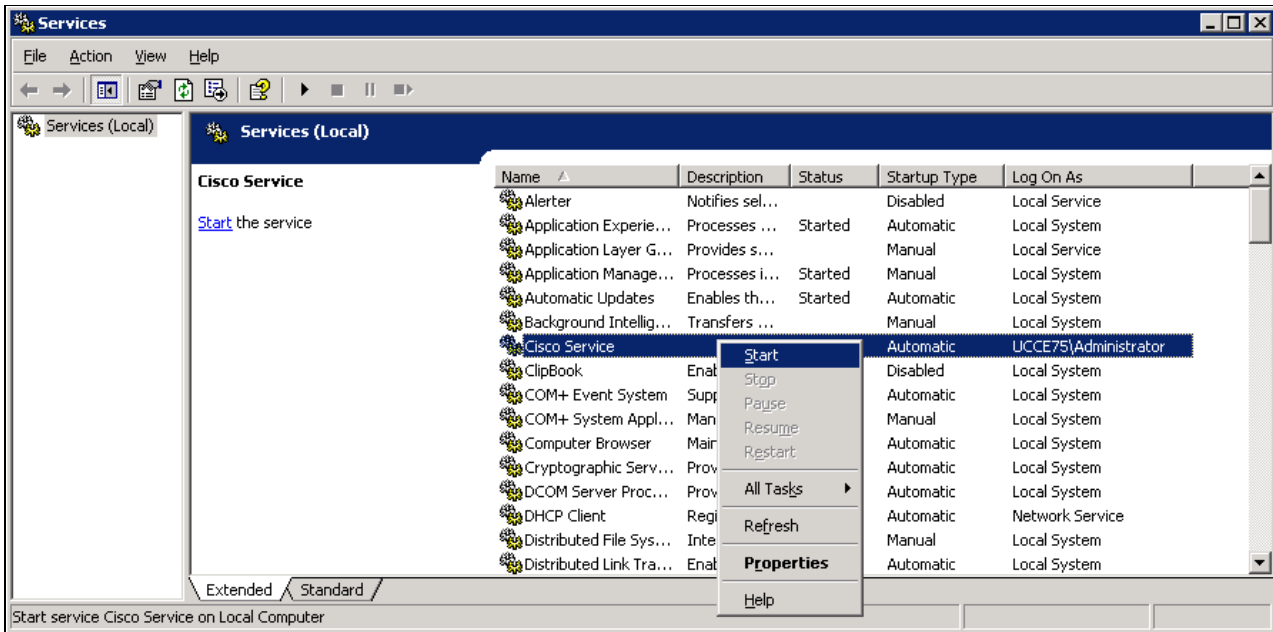
## Start\_Application\_Server

**Note:** We are starting the Application and Web Servers prior to the Services Server so we will be able to correlate java/javaw process IDs with the Process IDs JSP.

### Contents

- 1 Application Server Startup

### Application Server Startup



Note: 2 Java.exe are initially started; one ends @ ~20MB Mem Usage

- Total Java.exe at finish: 1 @ ~270MB Mem Usage
- Total Javaw.exe at finish: 0
- Total time for Startup: 90 seconds

**View a video example of Application Server Startup.**