

This chapter contains the procedures for viewing and managing the alarms and conditions on a Cisco ONS 15454.

Cisco Transport Controller (CTC) detects and reports alarms generated by the Cisco ONS 15454 and the Optical Networking System (ONS) network. You can use CTC to monitor and manage alarms at a card, node, or network level. You can also view alarm counts on the LCD front panel.

Contents

- [1 Before You Begin](#)
- [2 NTP-A195 Document Card, Node, and Network Provisioning](#)
- [3 NTP-A196 View Alarms, History, Events, and Conditions](#)
- [4 NTP-A68 Delete Cleared Alarms from Display](#)
- [5 NTP-A69 View Alarm-Affected Circuits](#)
 - ◆ [5.1 Figure 8-1: Select Affected Circuits Option](#)
- [6 NTP-A70 View Alarm Counts on the LCD for a Node, Slot, or Port](#)
 - ◆ [6.1 Figure 8-2: Shelf LCD Panel](#)
- [7 NTP-A71 Create, Download, and Assign Alarm Severity Profiles](#)
- [8 NTP-A168 Enable, Modify, or Disable Alarm Severity Filtering](#)
- [9 NTP-A72 Suppress Alarms or Discontinue Alarm Suppression](#)
- [10 NTP-A258 Provision External Alarms and Controls on the Alarm Interface Controller-International](#)
 - ◆ [10.1 Figure 8-3: Provisioning External Alarms on The AIC-I Card](#)

Before You Begin

This section lists the chapter procedures (NTPs). Turn to a procedure for applicable tasks (DLPs).

1. [NTP-A195 Document Card, Node, and Network Provisioning](#)-Complete this procedure as needed to print or export node data.
2. [NTP-A196 View Alarms, History, Events, and Conditions](#)-Complete this procedure as needed to see alarms and conditions occurring on the node and a complete history of alarm and condition messages.
3. [NTP-A68 Delete Cleared Alarms from Display](#)-Complete this procedure as needed to delete cleared alarm information.
4. [NTP-A69 View Alarm-Affected Circuits](#)-Complete this procedure as needed to find circuits that are affected by a particular alarm or condition.
5. [NTP-A70 View Alarm Counts on the LCD for a Node, Slot, or Port](#)-Complete this procedure as needed to see a statistical count of alarms that have occurred for a slot or port.
6. [NTP-A71 Create, Download, and Assign Alarm Severity Profiles](#)-Complete this procedure as needed to change the default severity for certain alarms, to assign the new severities to a port, card, or node, and to delete alarm profiles.
7. [NTP-A168 Enable, Modify, or Disable Alarm Severity Filtering](#)-Complete this procedure as needed to enable, disable, or modify alarm severity filtering in the Conditions, Alarms, or History screens at the node or network level.
8. [NTP-A72 Suppress Alarms or Discontinue Alarm Suppression](#)-Complete this procedure as needed to suppress reported alarms at the port, card, or node level and to disable the suppress command to resume normal alarm reporting.
9. [NTP-A258 Provision External Alarms and Controls on the Alarm Interface Controller-International](#)-Complete this procedure as needed to provision external alarms and controls on the Alarm Interface Controller-International (AIC-I) card.

NTP-A195 Document Card, Node, and Network Provisioning

Purpose	Use this procedure to print card, node, or network CTC information in graphical or tabular form on a Windows-provisioned printer. This procedure is useful for network record keeping and troubleshooting.
Tools/Equipment	A printer connected to the CTC computer by a direct or network connection
Prerequisite Procedures	<u>Turn Up a Node</u>
Required/As needed	As needed
Onsite/Remote	Onsite or remote
Security Level	Retrieve or higher

1. Complete the "DLP-A60 Log into CTC" task at the node where you want to record or save data. If you are already logged in, continue with Step 2.
2. As needed, complete the "DLP-A531 Print CTC Data" task.
3. As needed, complete the "DLP-A532 Export CTC Data" task.

Stop. You have completed this procedure.

NTP-A196 View Alarms, History, Events, and Conditions

Purpose	Use this procedure to view current or historical alarms and conditions for a card, node, or network. This information is useful for monitoring and troubleshooting hardware and software events.
Tools/Equipment	None
Prerequisite Procedures	None
Required/As Needed	As needed
Onsite/Remote	Onsite or remote
Security Level	Provisioning

1. Complete the "DLP-A60 Log into CTC" task at the node that contains the alarms you want to view. If you are already logged in, continue with Step 2.
2. Complete the "DLP-A390 View Alarms" task as needed.
3. Complete the "DLP-A517 View Alarm or Event History" task as needed.
4. Complete the "DLP-A111 Changing the Maximum Number of Session Entries for Alarm History" task as needed.
5. Complete the "DLP-A112 Display Alarms and Conditions Using Time Zone" task as needed.
6. Complete the "DLP-A113 Synchronize Alarms" task as needed.
7. Complete the "DLP-A114 View Conditions" task as needed.

Stop. You have completed this procedure.

NTP-A68 Delete Cleared Alarms from Display

Purpose	Use this procedure to delete Cleared (C) status alarms from the alarms window or transient messages from the CTC History window.
Tools/Equipment	None
Prerequisite Procedures	None
Required/As Needed	As needed

Onsite/Remote	Onsite or remote
Security Level	Retrieve or higher

1. Complete the "DLP-A60 Log into CTC" task. If you are already logged in, continue with Step 2.
2. To delete cleared node-level alarms:
 1. In the node view, click the **Alarms** tab.
 2. Click **Delete Cleared Alarms**, referring to the following rules:

- If the Autodelete Cleared Alarms check box is checked, an alarm disappears from the window when it is cleared.
- If the Autodelete Cleared Alarms check box is not checked, an alarm remains in the window when it is cleared. The alarm appears white in the window and has a Clear (C) severity. The alarm can be removed by clicking the Delete Cleared Alarms button.

This action removes any cleared ONS 15454 alarms from the Alarms tab. The rows of cleared alarms turn white and have a C in their status (ST) column.

3. To delete cleared card-level alarms:
 1. In the node view, double-click the card graphic for the card you want to open.
 2. Click the **Alarms** tab and then click **Delete Cleared Alarms**, referring to the note in Step 2.
4. To delete cleared network-level alarms:
 1. In the node view click **View > Go to Network View**.
 2. Click the **Alarms** tab and then click **Delete Cleared Alarms**, referring to the rules in Step 2.
5. To remove the transient messages from the History window, click **Delete Cleared Alarms**. Transient messages are single messages, not raise-and-clear pairs (that is, they do not have companion messages stating they are cleared).

Stop. You have completed this procedure.

NTP-A69 View Alarm-Affected Circuits

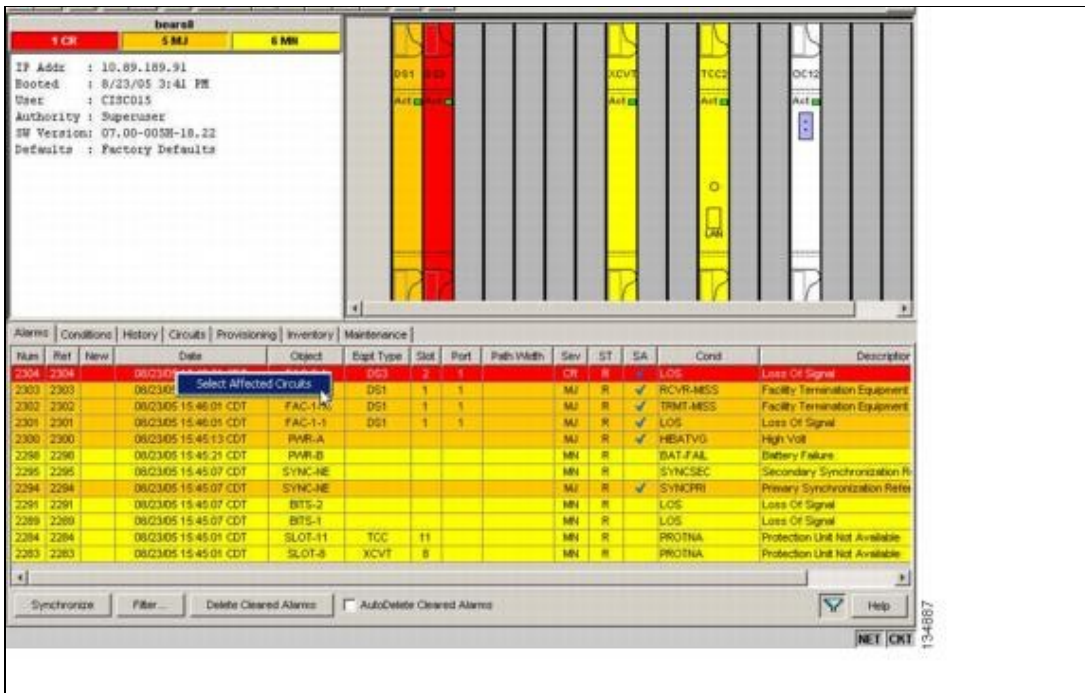
Purpose	Use this procedure to view all circuits, if any, that are affected by an alarm or condition.
Tools/Equipment	None
Prerequisite Procedures	<u>NTP-A196 View Alarms, History, Events, and Conditions</u>
Required/As Needed	As needed
Onsite/Remote	Onsite or remote
Security Level	Retrieve or higher

1. Complete the "DLP-A60 Log into CTC" task. If you are already logged in, continue with Step 2.
2. In the network, node, or card view, click the **Alarms** tab or **Conditions** tab and then right-click anywhere in the row of an active alarm or condition.

Note: The node view is the default, but you can also navigate to the Alarms tab in the network view or card view to perform Step 2.

The Select Affected Circuit option appears on the shortcut menu (Figure 8-1).

Figure 8-1: Select Affected Circuits Option



3. Left-click or right-click **Select Affected Circuits**.
The **Circuits** window appears with the affected circuits highlighted.
4. If you want to search for particular circuits, see the "[DLP-A131 Search for Circuits](#)" task.

Stop. You have completed this procedure.

NTP-A70 View Alarm Counts on the LCD for a Node, Slot, or Port

Purpose	Use this procedure to view an alarm summary for a node, slot, or port without using CTC.
Tools/Equipment	None
Prerequisite Procedures	None
Required/As Needed	As needed
Onsite/Remote	Onsite
Security Level	None

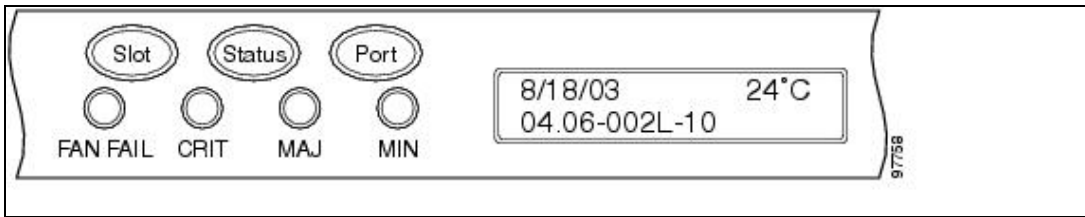
1. If you want to view the entire alarm summary for the node, press either the **Slot** button or **Port** button on the LCD panel until "Node" appears on the LCD. You will also see the direction, "Status=Alm Ct." This means that if you press the Status button at this time, as directed in Step 2, you will see an alarm count for the node.
2. Press the **Status** button to see a summary of alarms and severities for the node. You will see a message similar to "Alm CT: 2: MJ:2 MN:2," meaning that there are two Critical alarms, two Major alarms, and two Minor alarms.
3. If you want to see alarm counts for a particular slot, such as the alarms for an OC-3 card in Slot 2, press the **Slot** button until you see "Slot-3" on the LCD. You will see the direction, "Status=Alm Ct."
4. Press the **Status** button to see a summary of alarms and severities against the slot. For example, you might see "Slot-3 Alm CT:0 MJ:1 MN:2." This means that there are no Critical alarms, one Major alarm, and two Minor alarms against the slot.
5. If you want to view the alarms against a port on the card, such as Port 3 of the OC-3 card you viewed previously, press the **Port** button until you see "Port-3 Status=Alm Ct."

Figure 8-1: Select Affected Circuits Option

6. Press **Status** to view alarm count against the port. You will see a message similar to "Port-3 Alm CT:0 MJ:1 MN:0." This means that there is one Major alarm against this port.

Figure 8-2 shows the shelf LCD panel.

Figure 8-2: Shelf LCD Panel



To return to the previous view from the Port screen, continue to press **Port** until the display cycles through all the ports on the slot. For instance, on the OC-3 card, press Port until it cycles past Slot 4 and you see "Slot."

To return to the node menu from the Slot screen, press **Slot** until you cycle through all the slots and see "Node."

If you do not press any buttons, the LCD will return to its default display with the node name. However, if you did not cycle through the options to return to the node status, you will see the slot or port where you last checked status.

Note: A blank LCD results when the fuse on the alarm interface panel (AIP) board has blown. If this occurs, contact your next level of support. For information, see the [Obtaining Documentation and Submitting a Service Request](#).

Stop. You have completed this procedure.

NTP-A71 Create, Download, and Assign Alarm Severity Profiles

Purpose	Use this procedure to create a customized alarm profile at the network, node, or card level. This procedure also provides links to tasks that describe how to assign custom severities individually to each port, card, or node, and to delete alarm profiles.
Tools/Equipment	None
Prerequisite Procedures	None
Required/As Needed	As needed
Onsite/Remote	Onsite or remote
Security Level	Provisioning or higher

1. Complete the "[DLP-A60 Log into CTC](#)" task at the node where you want to create an alarm profile. If you are already logged in, continue with Step 2 to create, clone or modify an alarm profile, or go to Step 3 to download an alarm profile.
2. Complete the "[DLP-A518 Create a New or Cloned Alarm Severity Profile](#)" task. This task clones a current alarm profile, renames the profile, and customizes the new profile.
3. Complete the "[DLP-A524 Download an Alarm Severity Profile](#)" task. This task downloads an alarm severity profile from a CD or a node.

Note: After storing a created or downloaded alarm profile, you must go to the node (either by logging into it or clicking on it from the network view) and activate the profile by

applying it to the shelf, one or more cards, or one or more ports.

4. As necessary, complete the "[DLP-A519 Apply Alarm Profiles to Ports](#)" task or the "[DLP-A117 Apply Alarm Profiles to Cards and Nodes](#)" task.
5. As necessary, complete the "[DLP-A520 Delete Alarm Severity Profiles](#)" task.

Stop. You have completed this procedure.

NTP-A168 Enable, Modify, or Disable Alarm Severity Filtering

Purpose	Use this procedure to start, change, or stop alarm filtering for one or more severities in the Alarms, Conditions, and History windows in all network nodes.
Tools/Equipment	None
Prerequisite Procedures	None
Required/As Needed	As needed
Onsite/Remote	Onsite or remote
Security Level	Retrieve or higher

1. Complete the "[DLP-A60 Log into CTC](#)" task at the node where you want to enable alarm severity filtering. If you are already logged in, continue with Step 2.
2. As necessary, complete the "[DLP-A225 Enable Alarm Filtering](#)" task. This task enables alarm filtering at the card, node, and network views for all nodes in the network. Alarm filtering can be enabled for alarms, conditions, or events.
3. As necessary, complete the "[DLP-A521 Modify Alarm, Condition, and History Filtering Parameters](#)" task to modify the alarm filtering for network nodes to show or hide particular alarms or conditions.
4. As necessary, complete the "[DLP-A227 Disable Alarm Filtering](#)" task to disable alarm profile filtering for all network nodes.

Stop. You have completed this procedure.

NTP-A72 Suppress Alarms or Discontinue Alarm Suppression

Purpose	Use this procedure to prevent alarms from being reported for a port, card, or node in circumstances when an alarm or condition is known to exist but you do not want to include it in the display. This procedure also provides a link to a task that explains how to resume normal alarm reporting by discontinuing the suppression.
Tools/Equipment	None
Prerequisite Procedures	None
Required/As Needed	As needed
Onsite/Remote	Onsite or remote
Security Level	Provisioning or higher

1. Complete the "[DLP-A60 Log into CTC](#)" task. If you are already logged in, continue with Step 2.
2. Complete the "[DLP-A522 Suppress Alarm Reporting](#)" task to enable the node to send autonomous messages that clear specific raised alarms and cause suppressed alarms to appear in the Conditions window.

Note: Suppressing one or more alarms prevents them from appearing in Alarm or History windows or in any other clients. The suppress command causes CTC to display them in the Conditions window with their severity, their severity color code, and service-affecting status.

3. Complete the "[DLP-A523 Discontinue Alarm Suppression](#)" task to discontinue alarm suppression and resume normal alarm reporting.

Stop. You have completed this procedure.

NTP-A258 Provision External Alarms and Controls on the Alarm Interface Controller-International

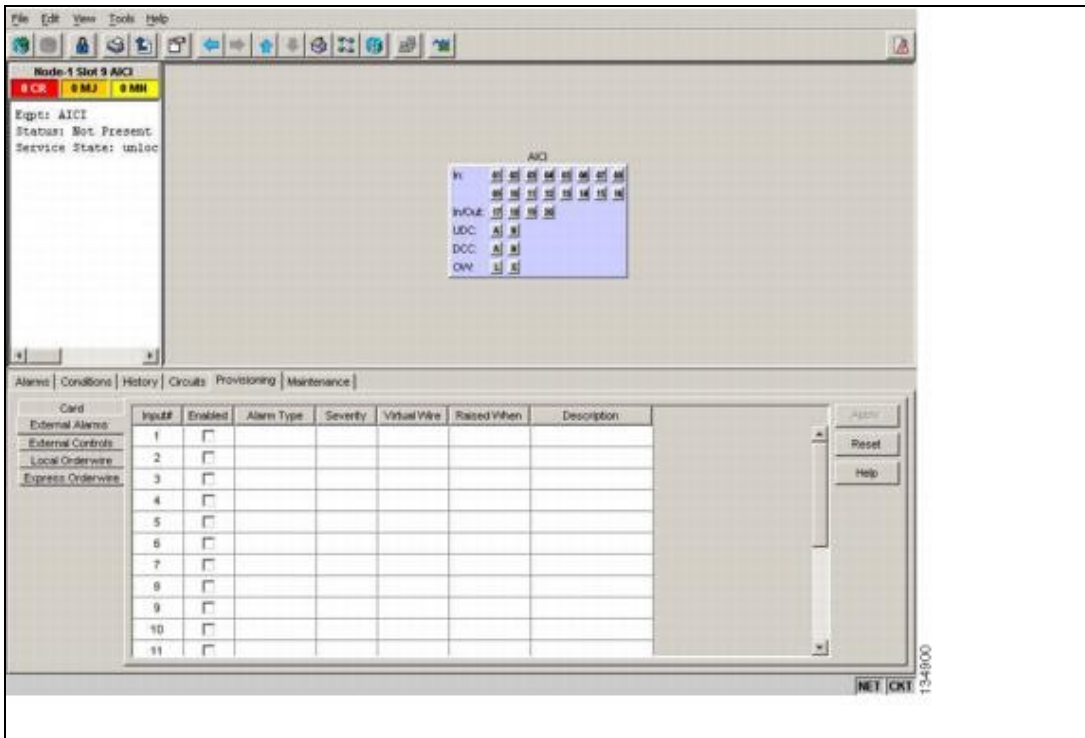
Purpose	Use this procedure to create external (environmental) alarms and external controls for the AIC-I card.
Tools/Equipment	An AIC-I card must be installed in Slot 9.
Prerequisite Procedures	NTP-A323 Verify Card Installation
Required/As Needed	As needed
Onsite/Remote	Onsite or remote
Security Level	Provisioning or higher

Note: The AIC-I card alarm provides direct alarm contacts (external alarm inputs and external control outputs) routed through the backplane to wire-wrap pins accessible from the back of the shelf. If you install an Alarm Expansion Panel (AEP), the AIC-I alarm contacts cannot be used. Only the AEP alarm contacts can be used. For further information about the AEP, see the [NTP-A119 Install the Alarm Expansion Panel](#) and the [NTP-A120 Install an External Wire-Wrap Panel to the AEP](#).

Note: For information about the AIC-I alarms, controls, and virtual wires, refer to the *Cisco ONS 15454 Reference Manual*.

1. Verify the backplane wiring using the following substeps. If you are using the AEP, see the [NTP-A119 Install the Alarm Expansion Panel](#). Otherwise, see the [NTP-A8 Attach Wires to Alarm, Timing, LAN, and Craft Pin Connections](#) for information about the ONS 15454 backplane pins.
 1. For external alarms, verify that the external device relays are wired to the ENVIR ALARMS IN backplane pins.
 2. For external controls, verify that the external device relays are wired to the ENVIR ALARMS OUT backplane pins.
2. Complete the "[DLP-A60 Log into CTC](#)" task. If you are already logged in, continue with Step 2.
3. In the node view, double-click the AIC-I card on the shelf graphic. The card view appears.
4. Click the **Provisioning > Card** tabs.
5. In the Alarm Contacts area, click the Add Extension radio button if you are using the AEP. Clicking this option will choose the External Alarm input/output type and the AEP extension type; it will give you access to 16 external alarm contacts.
6. If you did not click Add Extension, in the Input/Output area, choose either External Alarm or External Control. (External Alarm will limit your input/output options as explained in Step 5) Choosing External Control will enable both external alarms and external controls. This will convert four of the external alarm contacts to external controls, leaving 12 available external control contacts. The extension type for both options is AEP.
7. Click **Apply**.
8. To add User Defined Alarm Types, complete the "[DLP-A580 Create User Defined Alarm Types](#)" task. If you are not adding User Defined Alarm Types continue with Step 9.
9. If you are provisioning external alarms, click the **External Alarms** tab ([Figure 8-3](#)). If you are not provisioning external alarms, skip Steps 10 through 12 and go to Step 13.

Figure 8-3: Provisioning External Alarms on The AIC-I Card



10. For external alarms, complete the following fields:

- Enabled-Check the check box to activate the fields for the alarm input number.
- Alarm Type-Choose an alarm type from the drop-down list.
- Severity-Choose a severity from the drop-down list.
The severity determines the alarm's severity in the Alarms and History tabs and determines whether the LEDs are activated. Critical (CR), Major (MJ), and Minor (MN) alarms activate the LEDs. Not Alarmed (NA) and Not Reported (NR) do not activate LEDs, but do report the information in CTC.
- Virtual Wire-Choose the virtual wire number from the drop-down list to assign the external device to a virtual wire. Otherwise, do not change the None default. For information about the AIC-I virtual wire, see the "Alarm Monitoring and Management" in the *Cisco ONS 15454 Reference Manual*.
- Raised When-From the drop-down list, choose the contact condition (open or closed) that triggers the alarm.
- Description-A default description is provided; enter a different description if needed.

11. To provision additional devices, complete Step 10 for each additional device.

12. Click **Apply**.

13. For external controls, click the **External Controls** tab and complete the following fields for each control wired to the ONS 15454 backplane:

- Enabled-Check this check box to activate the fields for the alarm input number.
- Control Type-Choose the control type from the drop-down list: air conditioner, engine, fan, generator, heat, light, sprinkler, or miscellaneous.
- Trigger Type-Choose a trigger type: a local Minor, Major, or Critical alarm; a remote Minor, Major, or Critical alarm; or a virtual wire activation.
- Description-Enter a description.

14. To provision additional external controls, complete Step 13 for each device.

15. Click **Apply**.

ONS_15454_Procedure_Guide_R8.5.1_--_Manage_Alarms

Note: When you provision an external alarm, the alarm object is ENV-IN-*nn*. The variable *nn* refers to the external alarm's number, regardless of the name you assign.

Note: Environmental alarms that you create (and name) should be recorded locally for the NE. Both the Alarm name and resolution are node-specific.

Stop. You have completed this procedure.