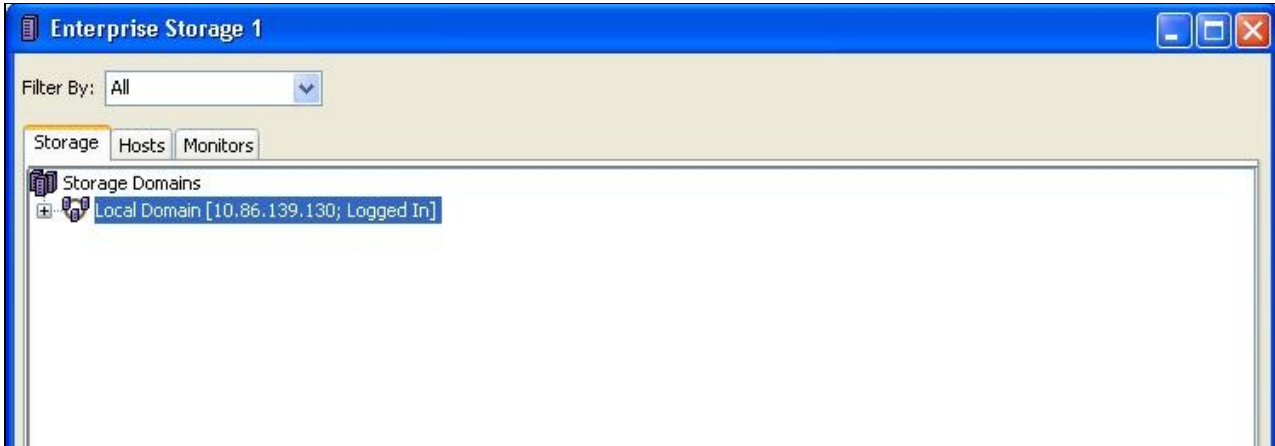


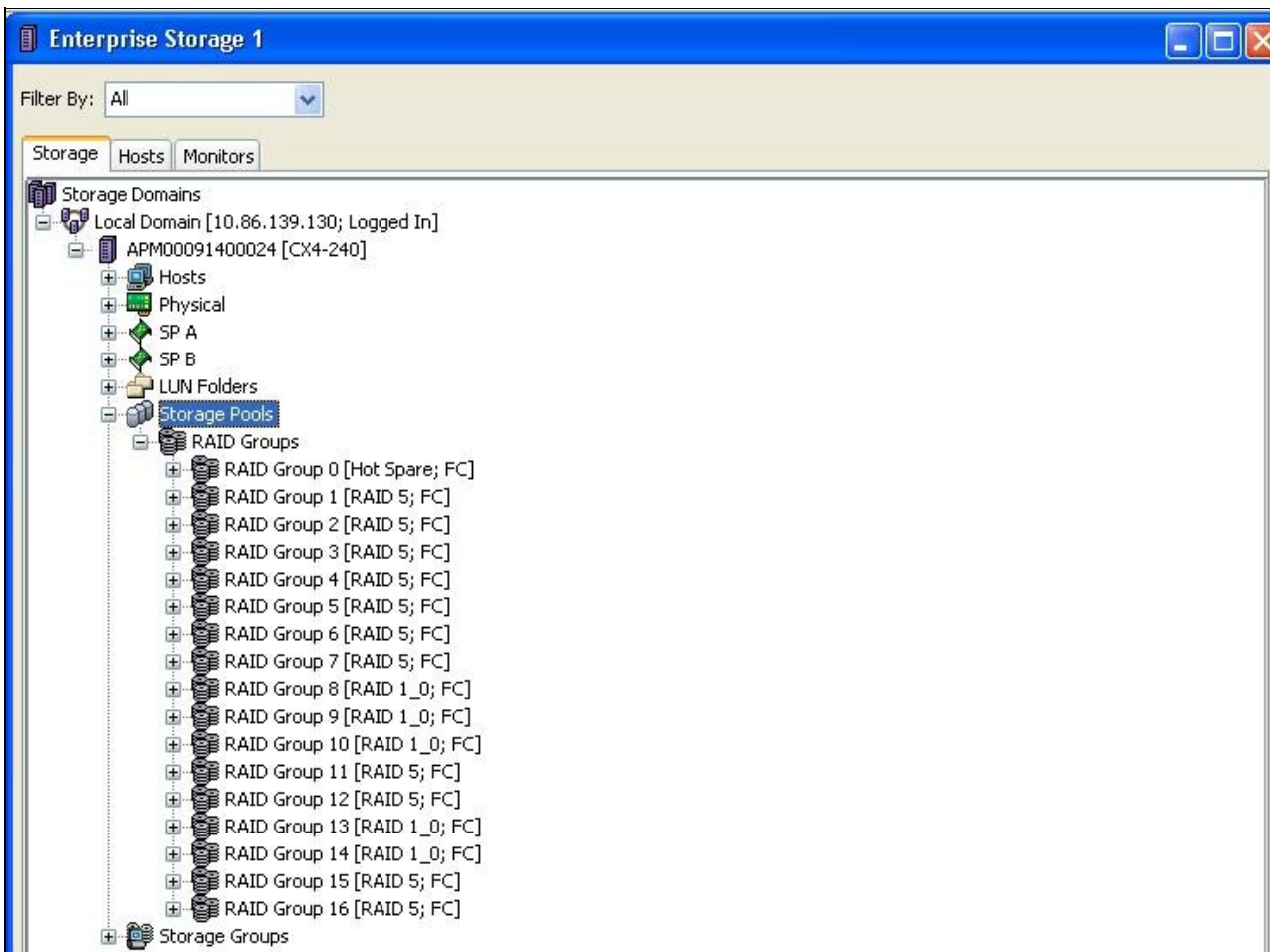
## Login to SAN

Open a browser (Java plug-in is required for this application) and direct to EMC access

Enter your Login Info: Once you are logged in you should see this

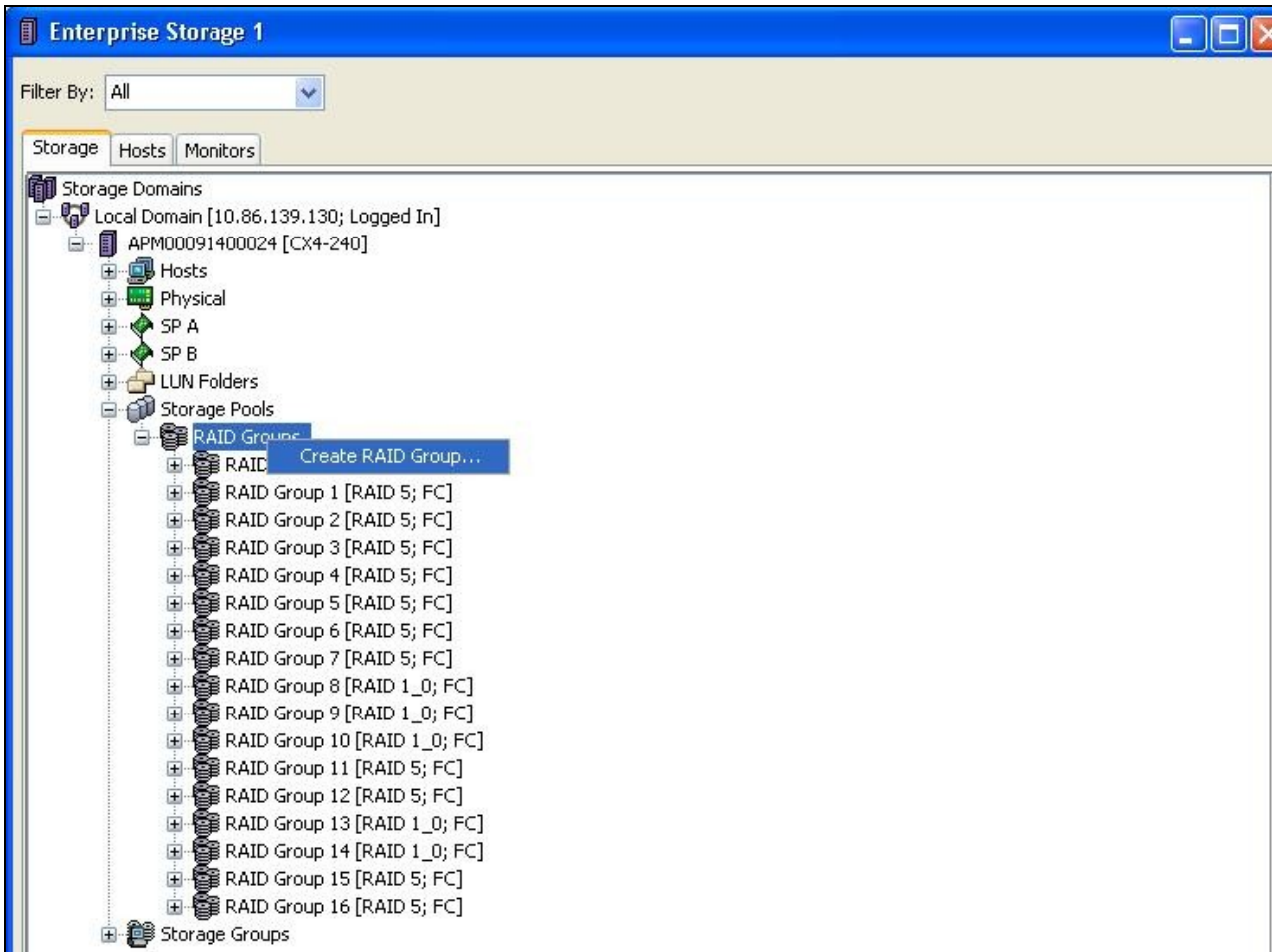


Now, navigate to "Storage Pools"



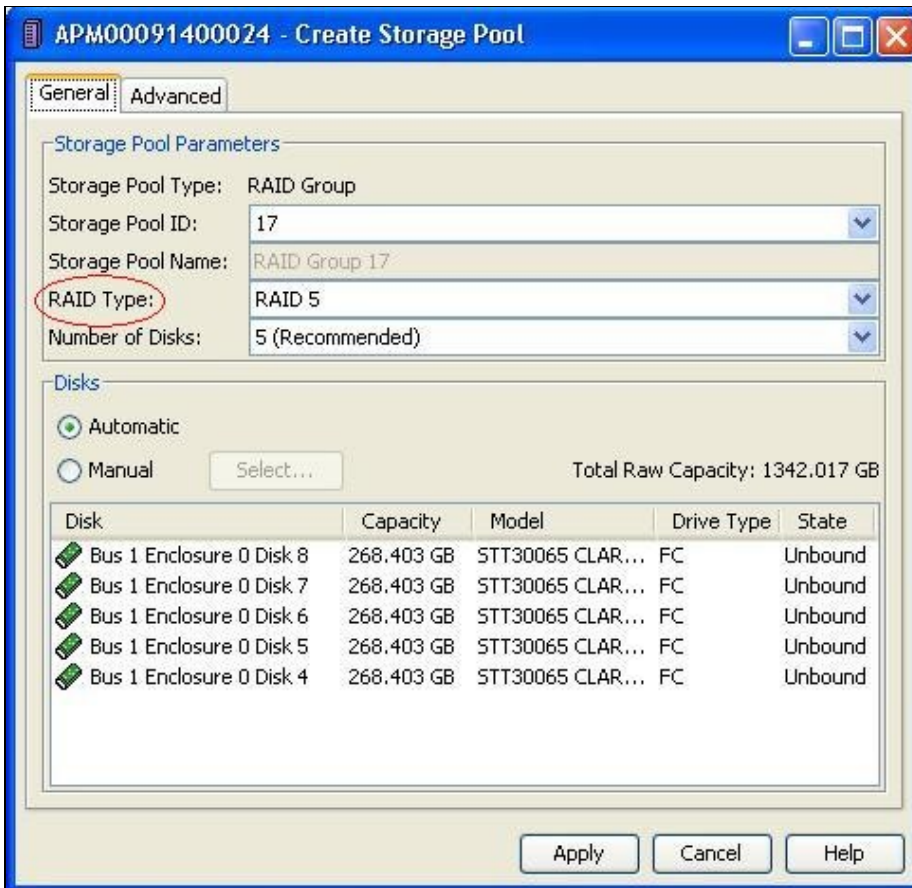
Right Click on "RAID Groups"

Login to SAN

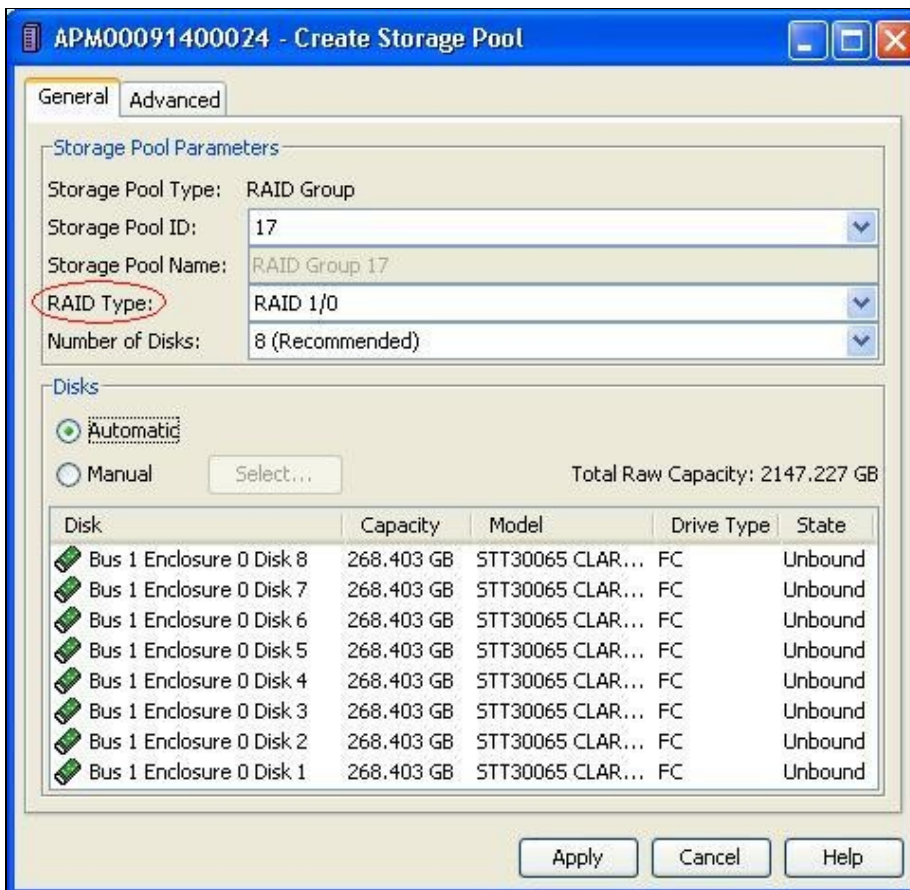


From the "RAID Type:" Choose either RAID 5 or RAID 10 based on your selection.

## RAID 5

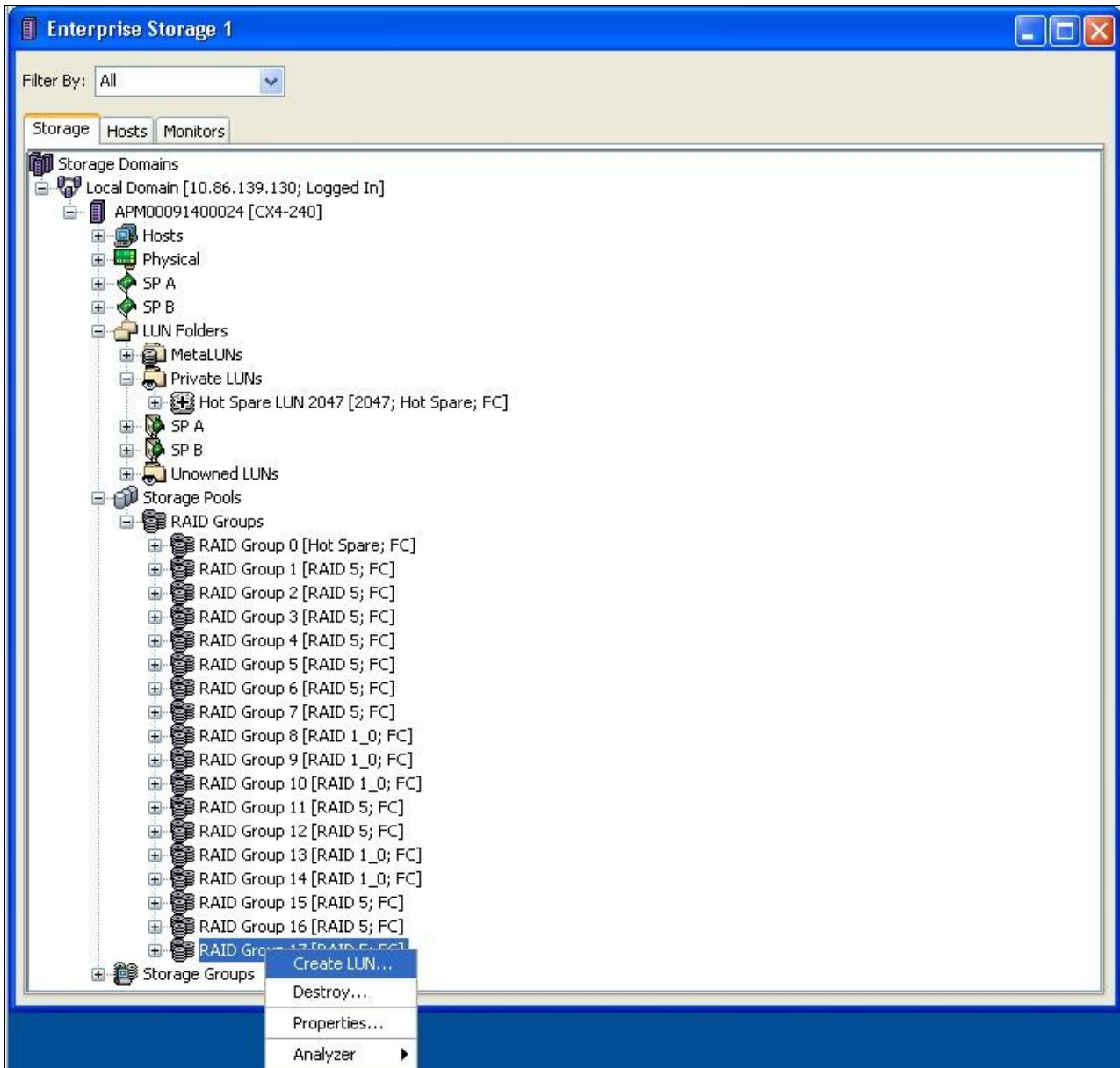


## RAID 10

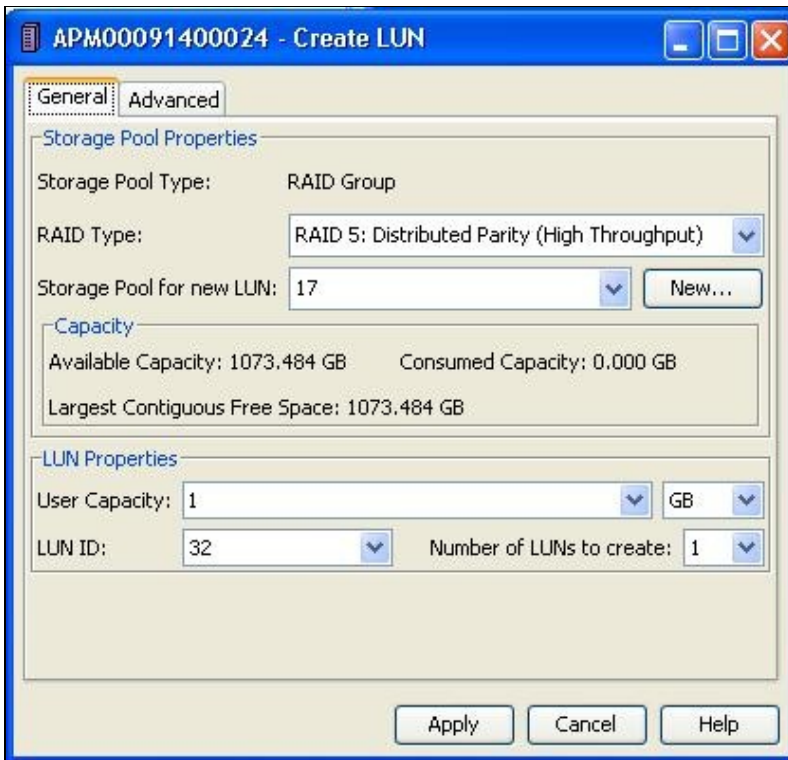
**Next Step:**

Create \*Logical Unit Number (LUN)\*

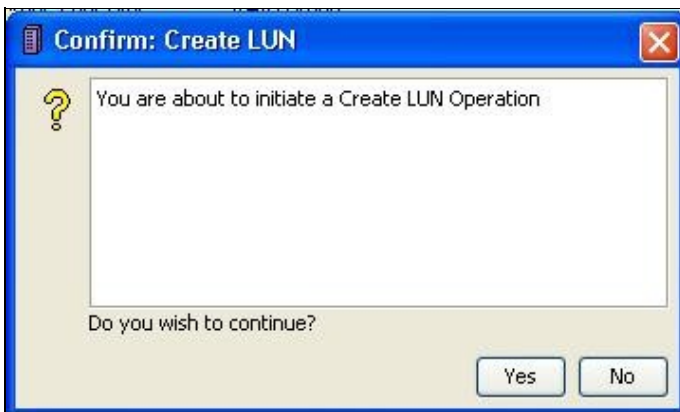
Now, right click on your +RAID Group+ \_{+}ID{+}\_ and select \*Create LUN...\* option



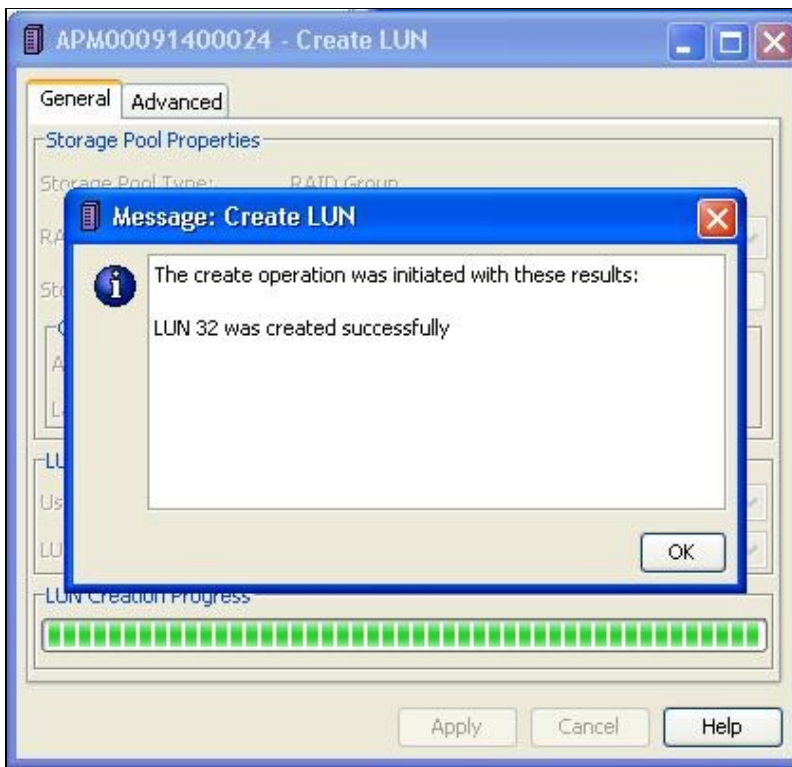
On the configuration page, leave everything as default and click on \*Apply\*



A confirmation message window will appear, please select \*Yes\* to continue.

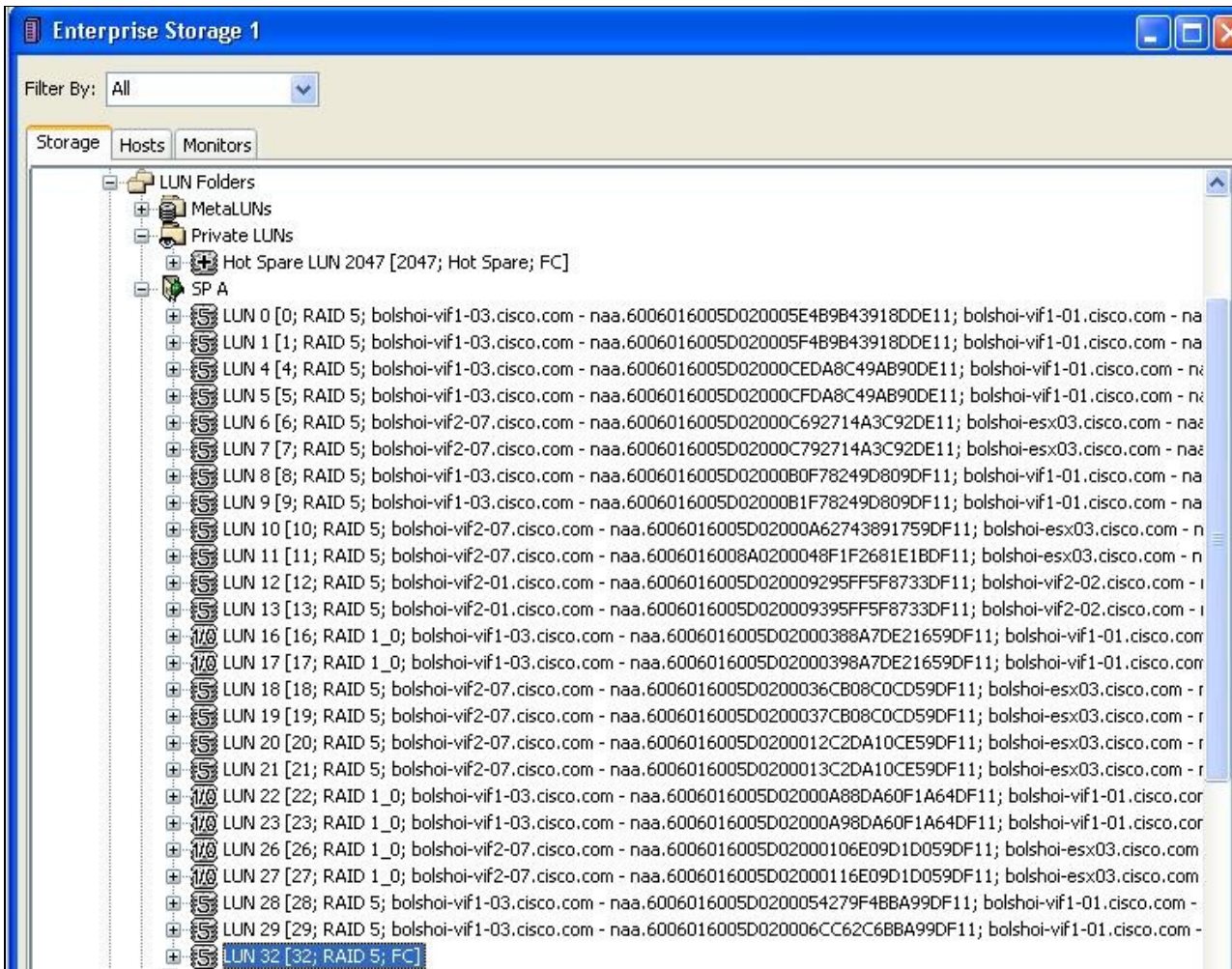


You should see the following message if you have successfully created LUN:



Now, you should be able to see the new created LUN under the "\*LUN Folders\*"

## CVP\_Reporting\_Server\_Configuration



Now right click and Select Option of "+Add to Storage Group...+"



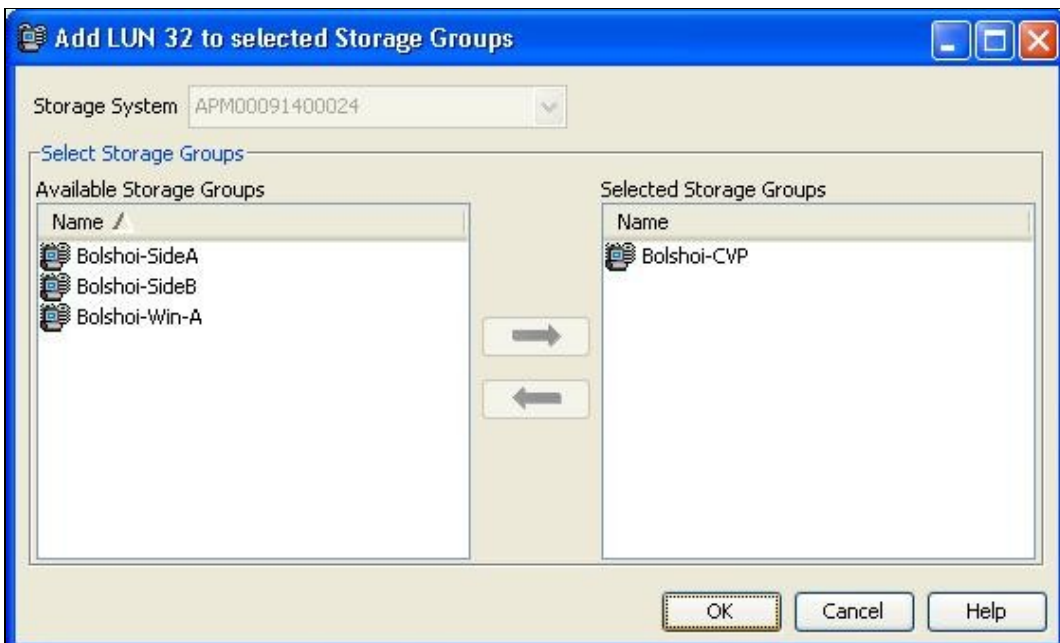
On the assign page:



## CVP\_Reporting\_Server\_Configuration



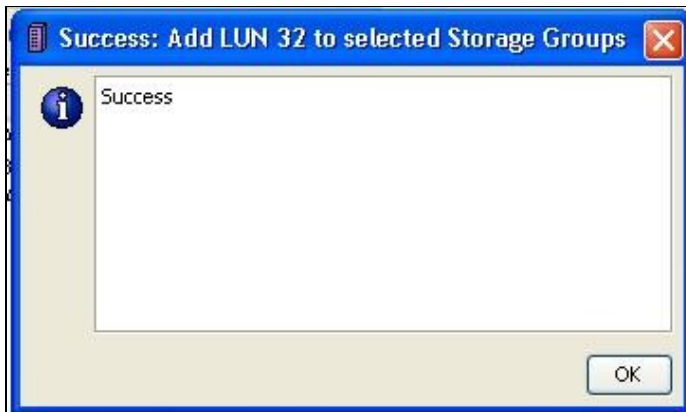
Click on the arrow "->" and click \*OK\*



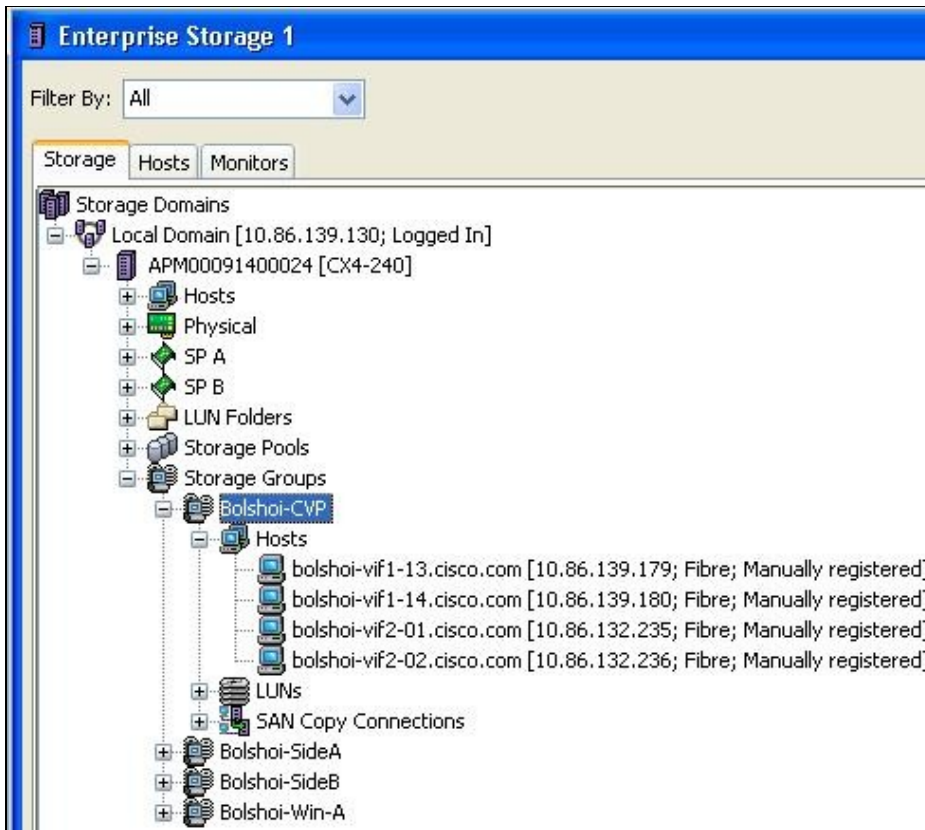
Confirmation message pop-up window:



Success message will appear.



You should now see it under your "Storage Groups"



**You will be able to see Disk available from the VMWare station that has access to the Hosts you assigned to the Storage Groups.**