

## Contents

- 1 Property File Validation
- 2 CMB Parameter Validation in CIM
- 3 Troubleshooting
  - ◆ 3.1 netstat
  - ◆ 3.2 Tracing
- 4 Resolution

## Property File Validation

1. Verify the correct settings are configured in the collaboration.properties file located on the CMB server. Navigate to C:\CiscoMB\servlet\Properties\Blender\collaboration.properties

```
# Don't change the following two lines
name=Remote-WIM
package=com.cisco.ics.blender.remote

# Hostname of CCS (must be in system hosts file)
remotehost=10.87.100.71

# Remote service name
remoteservice=Connection_CCS_BAPI

# Remote registry port
remoteregistryport=15099

# Remote password
remotepassword=(enc:2)Y2NzcHc=

# Local service name
localservice=Connection_CMB_BAPI

# Local registry port
localregistryport=3099

# Local password
localpassword=(enc:2)Y211cHc=

# Ignore queue and start events from other media
acceptqueue=false
acceptstart=false
```

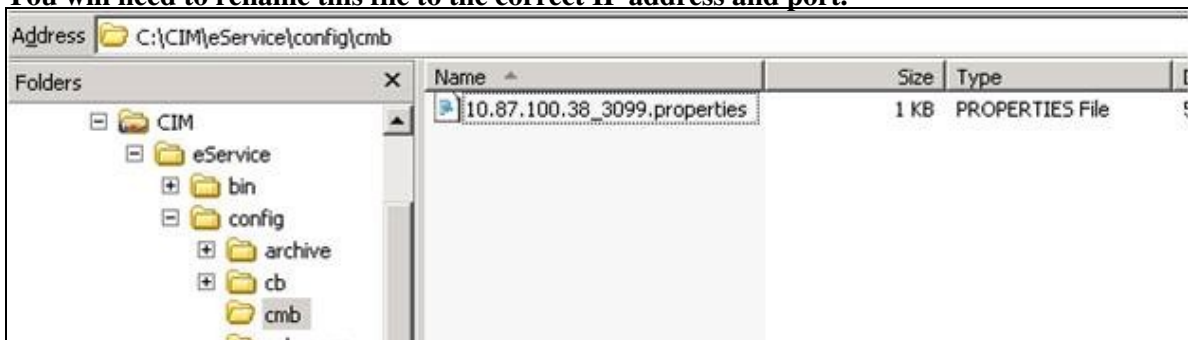
The IP Address of the CIM Services Server

CIM RMI port defined during install of CIM. Default value is 15099  
CMB default is 1099

CMB Encrypted passwords.  
Local Password is CMB  
Remote Password is CIM

2. Verify the correct settings are configured on the CIM CMB properties file located on the CIM Services Server. Navigate to C:\<CIM\_Home\_Directory>\eService\config\cmb\<ipAddressofCMB\_port>.properties

**You will need to rename this file to the correct IP address and port.**



## CMB\_Unable\_to\_Establish\_RMI\_Link\_to\_CIM

```
10.87.100.38_3099.properties - Notepad
File Edit Format View Help

#path for CMB server filesystem
WLROOT=C:\\CiscOMB

#Don't change this
package=com.cisco.ics.blender.remote
TransportType=rmi

# Name for this medium
name=Remote-BAPI

#Hostname or ip address of BAPI application
RemoteHost=10.87.100.38

#Remote Port number for BAPI application
RemoteRegistryPort=3099

#Local Port number for BAPI application
LocalRegistryPort=15099

#Name for this (Blender) side of the rmi service
LocalService=Connection_CCS_BAPI
#name for the other (API) side of the rmi service
RemoteService=medium

# Remote password
RemotePassword={enc:2}Y21icHC=

#password for this (Blender) side
LocalPassword={enc:2}Y2NzCHC=

PROVIDER_IN_SERVICE_WAIT_TIME=10
```

IP Address of the CMB Server

Verify that the RMI ports are configured

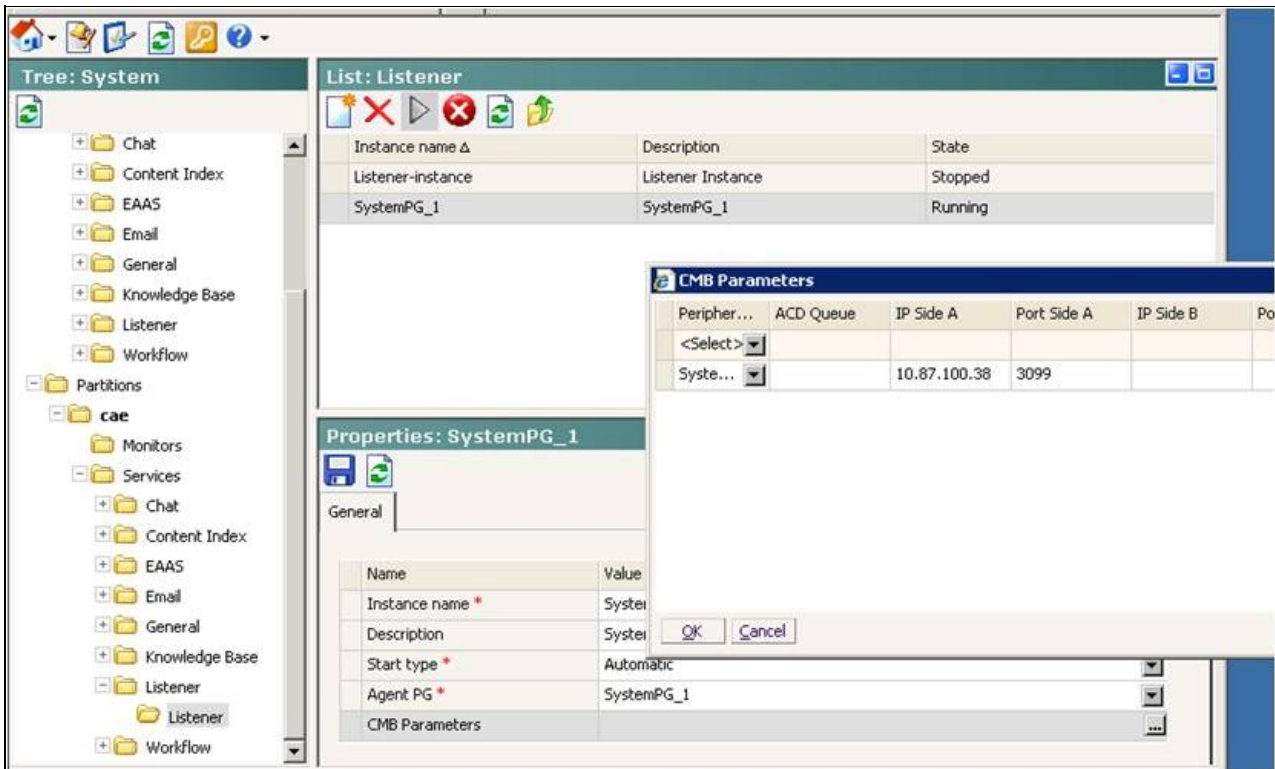
Verify passwords Take Note:  
Remote Password = Local Password on CMB  
Local Password = Remote Password on CMB

Any changes to properties files require a restart of Cisco Media Blender

## CMB Parameter Validation in CIM

From the System Web Interface Navigate to System Console > Partitions > Default Partition > Listener  
Verify the following configuration in the CMB Parameters. The parameters in this table must match the name of the collaboration.properties file as configured above.

- Peripheral ? Select the Agent PG which CIM is connecting to
- IP Side A ? IP Address of the CMB Server
- Port Side A ? Port CMB is listening on



Any changes to these CMB Parameters require a restart of the Listener process.

## Troubleshooting

### netstat

- From a command line verify the status of the CMB listening port:

```
C:\Documents and Settings\administrator.CAE>netstat -an | find "3099"
TCP    0.0.0.0:3099          0.0.0.0:0           LISTENING
TCP    10.87.100.38:3099    10.87.100.71:3063   TIME_WAIT
TCP    10.87.100.38:3099    10.87.100.71:3064   TIME_WAIT
TCP    10.87.100.38:3099    10.87.100.71:3065   TIME_WAIT
TCP    10.87.100.38:3099    10.87.100.71:3066   TIME_WAIT
TCP    10.87.100.38:3099    10.87.100.71:3067   TIME_WAIT
TCP    10.87.100.38:3099    10.87.100.71:3068   TIME_WAIT
TCP    10.87.100.38:3099    10.87.100.71:3069   TIME_WAIT
TCP    10.87.100.38:3099    10.87.100.71:3070   TIME_WAIT
TCP    10.87.100.38:3099    10.87.100.71:3071   TIME_WAIT
TCP    10.87.100.38:3099    10.87.100.71:3072   TIME_WAIT
TCP    10.87.100.38:4983    10.87.100.38:3099   TIME_WAIT
```

## Tracing

Additional tracing can be enabled by changing the verbose level to 10. **NOTE: USE THIS LEVEL WITH CAUTION IN PRODUCTION. BE SURE TO REVERT TO 5 WHEN FINISHED AND RESTART CMB**

- To change tracing levels navigate to the blender.properties file located on the Cisco Media Blender

## CMB\_Unable\_to\_Establish\_RMI\_Link\_to\_CIM

in \CiscoMB\servlet\Properties\Blender

```
#####  
# The following properties should only be changed by advanced users,  
# or at the request of the Cisco Technical Assistance Center (TAC).  
#####  
# log level  
verbose=10
```

- Restart the Media Blender
- The CMB log file is located at C:

```
05/11/2010 13:51:43.867 TRACE INTERNAL_STATE Blender com.cisco.ics.blender.remote.Medium Remote-WIM "ServletExec:  
request: time=1273585838288, uri=/servlet/BlenderNew" "" - Creating rmi transport.  
05/11/2010 13:51:43.867 TRACE CODE_MARKER Blender com.cisco.ics.blender.remote.Medium Remote-WIM "ServletExec:  
request: time=1273585838288, uri=/servlet/BlenderNew" "" - Creating rmi driver with properties  
{RemotePassword={enc:2}Y2NzCHc=, LocalPassword={enc:2}Y21icHc=}  
05/11/2010 13:51:43.883 ERROR FATAL common.2 LegacyError com.cisco.io.net.rmi.RmiDriver Init "ServletExec:  
request: time=1273585838288, uri=/servlet/BlenderNew" "java.lang.RuntimeException: Unable to attach to local  
registry." - Legacy error: Unable to bind Authentication module to registry  
05/11/2010 13:51:43.883 ERROR FATAL cmb.0 Error com.cisco.ics.blender.Blender "" "ServletExec: request:  
time=1273585838288, uri=/servlet/BlenderNew" "java.lang.RuntimeException: java.lang.RuntimeException: Unable to  
attach to local registry." - Error during load of  
medium:C:\CiscoMB\servlet\properties\Blender\Collaboration.properties - exception:java.lang.RuntimeException:  
java.lang.RuntimeException: Unable to attach to local registry.
```

- This indicates the application is unable to create and start a registry on the specified port
- After changing the port as outlined in the sections above, restart the IIS and WWW windows process on the CMB server (Start > Run > services.msc)
- Prior to restarting CMB, don't forget to change the logging level in the blender.properties file and restart CMB when troubleshooting is completed

## Resolution

CMB RMI Link issues can be a combination of issues with property files and Listener parameters.